

Providing Northwest berry growers with the information they need when they need it.

# Small Fruit Update



The Small Fruit Update is sent out weekly during the growing season by [The Northwest Berry Foundation](#) and is funded entirely by the Northwest berry growers and industry through their commissions and councils.

February 3, 2016

Week 5

## Table of Contents

- [Small Fruit Conference Videos](#)
- [Events and Meetings](#)
- [Industry News](#)
- [Pest Management](#)

- [China's Blueberry Industry Continues to Show Robust Growth](#) (2/1, China Ag)
- [Strawbotics: The next generation in strawberry harvesting tech](#) (12/7, The Snack)
- [Creating a gentler, more profitable way to harvest blueberries](#) (1/14, Fruit Growers News)
- [Homegrown Organic and Cal Giant Foresee Strong California Blueberry Season](#) (1/28, andnowyouknow.com)

[The Weather Cafe](#) by Rufus La Lone [Small Fruit Cold Storage report](#)



Lady bug larvae photo by Jason Myer

## Disseminating information for:

### Washington

[Washington Red Raspberry Commission](#)  
[Washington Blueberry Commission](#)  
[Washington Strawberry Commission](#)

### Oregon

[Oregon Raspberry and Blackberry Commission](#)  
[Oregon Blueberry Commission](#)  
[Oregon Strawberry Commission](#)

### British Columbia

[B.C. Strawberry Growers Association](#)  
[Raspberry Industry Development Council](#)  
[B.C. Blueberry Council](#)

### National

[North American Blueberry Council](#)

## North Willamette Hort Society Meeting—Berry Section Presentations

---

Below are PDF's of some of the presentations from the January 14 meeting in Canby. [Go here](#) for all videos.

- [USDA-ARS Breeding Program Update](#) Chad Finn, USDA-ARS
- [Drip irrigation system maintenance and soil moisture sensors for irrigation scheduling](#) Troy Peters, WSU Extension
- [Nematode research in berry crops](#) Inga Zasada, USDA-ARS
- [Preplant soil fumigation and alternatives for berry production](#) WSU Extension Factsheet

## B.C. Blueberry Council—new exporting opportunities to China and/or South Korea

---

- [Go Here](#) for information.
- [Canadian Food Inspection Agency Notice](#) Field Registration deadline is **February 14**.

## Raspberry, Blackberry and Strawberry Commercial Plant Suppliers

---

- [Lassen Canyon Nursery](#), Manteca, CA  
*Suppliers of raspberry and blackberry tissue culture and root stock plants. Along with regular commercial orders for named cultivars, they can supply a limited number of plants of many of the advanced selections for on-farm trials on request. Lassen Canyon Nursery also is a major commercial supplier of both June bearing and Day-neutral strawberries.*
- [North American Plants, Inc.](#), McMinnville, OR  
*Suppliers of blackberry, raspberry and blueberry tissue culture plants. Along with regular commercial orders for named cultivars, they can supply a limited number of plants of many of the advanced selections for on-farm trials on request.*
- [Northwest Plant Company](#), Lynden, WA  
*Suppliers of raspberry tissue culture and root stock plants and blackberry tissue culture plants. Along with regular commercial orders for named cultivars, they can supply a limited number of plants of many of the advanced selections for testing purposes on request.*
- [NORCAL Nursery](#), Red Bluff, CA  
*Major commercial supplier of both June bearing and Day-neutral strawberries.*
- [Nourse Farms](#)  
*Suppliers of all berries. Nourse Farms, based in Massachusetts but also has operations in Washington State. They have a very extensive availability list with many fresh market caneberry cultivars available from small to very large numbers.*
- [Sakuma Brothers](#), Mt. Vernon, WA  
*Suppliers of raspberry root stock plants.*
- [Spooner Farms](#), Puyallup, WA  
*Suppliers of wholesale raspberry and strawberry root stock plants.*



# Berry Event Calendar

---

## Events with Grower Information Sessions

- **New Posting: February 12 — OSU Hood River Blueberry Pruning Workshop** ~ in Hood River, 1-4 pm. [Go Here](#) for all the details. For more information call Steve Castagnoli (541-386-3343 ext 38255) or [email](#).
- **February 18 — Oregon Strawberry Commission Annual Meeting** ~ at North Willamette Research & Extension Station. Email Philip Gutt for more information, [pnwa@comcast.net](mailto:pnwa@comcast.net).
- **March 9 — 11th Annual Production Workshop for Commercial Raspberry & Blackberry Growers** ~ at the Wellspring Conference Center in the Silverton Health Building, 1475 Mt. Hood Ave., Woodburn, OR. Details coming soon. For more information call the Northwest Berry Foundation (503) 289-7287.

## Commission Meetings

- **February 29 — Oregon Raspberry and Blackberry Commission** ~ 11 am Hayden's Grill, Tualatin. Committee meetings start at 9. Contact: [berries@oregon-berries.com](mailto:berries@oregon-berries.com)
- **March 15 — Oregon Blueberry Commission meeting** ~ Noon at the Chemeketa Events at Winema, Building 48, Room 210, Salem. Email [jenny@ostlund.com](mailto:jenny@ostlund.com) for more information.
- **April 26 — Oregon Blueberry Commission meeting** ~ Noon at the Chemeketa Events at Winema, Building 48, Room 210, Salem. Email [jenny@ostlund.com](mailto:jenny@ostlund.com) for more information.

## National Berry Events

- **March 1-4 — 2016 North American Raspberry & Blackberry Conference** ~ Williamsburg, Virginia. [Go here](#) for all the details.
- **March 2-4 — North American Blueberry Council & US Highbush Blueberry Council Spring meetings** ~ Dallas, Texas. [Go here](#) for the draft agenda. Go here for more information: [U.S. Highbush Blueberry Council website](#).



---

## Industry news/resources

### Berry research blogs

- [Strawberries and Caneberries](#) by Mark Bolda, UC Davis Berry Extension Agent. **Recent Entry:** (1/16) **New raspberry varieties Imara, Kwanza and Kweli** *Reports on recent insect and disease research and observations in California.*
- [Team Rubus](#) by Gina Fernandez, North Carolina State Small Fruit Specialist. **Recent Entry:** (12/16) **Blackberry and raspberry seasonal checklist for Winter 2015-16** *Reports on issues in blackberries and raspberries from the Southeast*

## Newsletters/ berry reports

- [Whatcom Ag Monthly](#) *Produced by WSU Whatcom County Extension. Includes excellent berry crop information.*
- [National Berry Report](#) *Daily fresh market berry reports generated from data from the USDA Agricultural Marketing Service. Hosted by the California Strawberry Commission.*
- [Weekly Market Report from General Produce](#)
- [Weekly Chilean Blueberry Committee Crop & Exports Report](#)
- [USDA Market News \(Fruits & Vegetables\)](#)

## Magazine/website compilations

- **Fresh Plaza:** [fruit](#)
- **The Packer:** [blueberries](#), [blackberries](#), [raspberries](#), [strawberries](#).
- **Growing Produce:** [recent berry articles](#).
- **Andnowyouknow.com:** [blueberries](#), [blackberries](#), [raspberries](#), [strawberries](#).
- **Fruitnet-Eurofruit:** [recent berry articles](#).
- **Fresh Fruit Portal:** [blueberries](#), [blackberries](#), [raspberries](#), [strawberries](#).

## Weather/Climate

- [Snowpack in California reaches 5-year high](#) (1/27, andnowyouknow.com)
- [Transition to La Nina could be speeding up](#) (1/29, Ag Professional)

## Water

- California: [Water, regulatory costs top California Fresh Fruit priorities](#) (1/29, The Packer)

## Labor

- [More than one H-2A provider serves Washington](#) (1/28, Capital Press)
- [H-2A is expensive but essential](#) (1/28, Good Fruit Grower)

## Pollinators

- [Die-offs fluster beekeepers on eve of California almond blossom](#) (1/27, Capital Press)
- [Bee thefts pick up as almond bloom begins](#) (2/2, Western Farm Press)
- [New ARS bee gene bank will preserve genetic diversity](#) (1/28, Ag Professional)
- [Mechanical pollination rarely supplements bee pollination](#) (1/20, Western Farm Press)

## Technology/Research

- [Robot Harvester a Reality for Strawberries](#) (1/27, Produce News) 4 minute video.
- [New technology aims to cut blueberry losses](#) (1/26, The Packer)
- [Things to know before flying a small unmanned aircraft system](#) (1/27, Ag Professional)
- [Robot arm sorts and stacks delicate fruit](#) (1/26, Reuters)

## Business

- [Rainier Showcases Company's Organic Operation](#) (12/1, andnowyouknow.com)

## Organics

- [Organic tackles the scale issue](#) (1/25, The Packer)

## North America

- Maine: [Wild blueberry commission asks feds to buy surplus](#) (1/25, Mainebiz)
- Michigan: [Fruit producers to get new freezer, warehouse at South Haven](#) (1/8, Michigan Farm News)
- Michigan: [Picky wasp attacks only certain Michigan blueberry bushes](#) (1/29, WMUK) *It's [blueberry stem gall wasp](#) and it seems to only like Liberty.*

## International

- China: [Driscoll's Partners on Chinese Berry Production](#) (1/29, The Packer)
- Japan: [Blueberry exports to Japan decrease](#) (1/28, Capital Press)
- Chile: [Project to improve blueberry](#) (2/1, Fresh Plaza)
- Mexico: [Mexican berry producers hope to conquer China](#) (2/1, Fresh Plaza)

- Mexico: [50% of strawberries damaged by cold weather](#) (2/1, Fresh Plaza)
- Peru: [Blueberries now a “nine month business” for Camposol](#) (1/25, Fresh Fruit Portal)

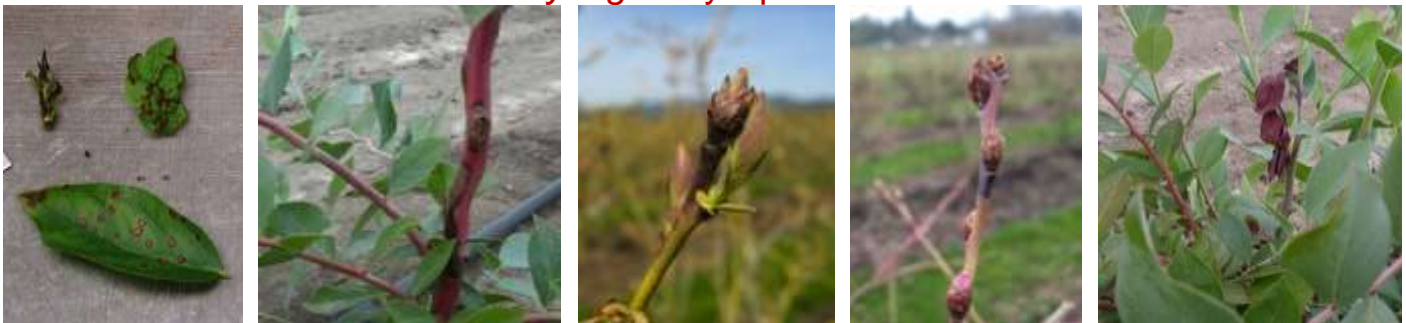


## Pest Management Information

**Bacterial Blight** (*Pseudomonas syringae*), blueberries.

- [Go here](#) for a PCM Research Update on bacterial blight first posted on 1/3/13.

### *Pseudomonas syringae* symptoms in blueberries



*Photos are from Joyce Loper's & Virginia Stockwell's power point presentation of their work on this disease*

- Late January and February can bring warm spells that can cause blueberry buds to start swelling.
- These swelling buds are vulnerable to infection by the ever present bacteria, *Pseudomonas syringae*, especially during warm, wet weather.
- Once infected, those buds are vulnerable to subsequent freeze damage at a higher temperature than buds that aren't infected.
- If warm, wet weather is predicted, applications of copper can help prevent *Pseudomonas* infections
- **Caution:** Many strains of this bacteria are resistant to copper compounds. Avoid over applying to help minimize resistance.

### **Starling management**

- Right now starlings are starting to think about fledging (*you know they are...*). Population control becomes very difficult once that starts because they multiply rapidly. This is a major pest species that needs year round management attention.
  - [Starling Population Control Methods](#) (Wild Wing Company)

- [Click here](#) for a starling fact sheet.
- [Click here](#) for a starling nesting fact sheet.

## **Archived Small Fruit Updates**

*(For older Updates [go here.](#))*

[3-SFU1-22-16](#)

[1-SFU01-04-16](#)

[48-SFU11-25-15](#)