

Providing Northwest berry growers with the information they need when they need it.



The Small Fruit Update is sent out weekly during the growing season by [The Northwest Berry Foundation](#) and is funded entirely by the Northwest berry growers and industry through their commissions and councils.

January 22, 2016

Week 3

Table of Contents

- [Small Fruit Conference](#)
- [Videos](#)
- [Events and Meetings](#)
- [Industry News](#)
- [Pest Management](#)

- [Inventure Foods Expands its Frozen Food Manufacturing Footprint with new Packaging Facility in Pacific Northwest](#) (1/19, *The Business Journals*)
- [Understanding Honey Bee Biology and Decline](#) (12/13) Video of an excellent presentation by Tim Lawrence, WSU.
- [Thornless Marionberries reduce liability concerns](#) (10/27, *Capital Press*)
- [Fruit Growers Expect Sweet '16](#) (12/31, *Growing Produce*) Survey Results.

[The Weather Cafe](#) by Rufus La Lone [Small Fruit Cold Storage report](#)



Legacy blueberries in January

Disseminating information for:

Washington

[Washington Red Raspberry Commission](#)
[Washington Blueberry Commission](#)
[Washington Strawberry Commission](#)

Oregon

[Oregon Raspberry and Blackberry Commission](#)
[Oregon Blueberry Commission](#)
[Oregon Strawberry Commission](#)

British Columbia

[B.C. Strawberry Growers Association](#)
[Raspberry Industry Development Council](#)
[B.C. Blueberry Council](#)

National

[North American Blueberry Council](#)

Washington Small Fruit Conference Videos

Below are direct links to some of the presentations from the December Conference in Lynden. [Go here](#) for all videos.

- [PNW Small Fruit Buyer Panel](#)
- [Washington Red Raspberry Commission Annual Meeting](#)
- [Washington Blueberry Commission Annual Meeting](#)
- [Fungicide Resistance of Botrytis in Berry Crops](#)
- [Mummyberry in PNW Blueberries](#)
- [Advances in Mummyberry Control](#)
- [Managing Soilborne Diseases in Raspberries through Removal of Root Inoculum](#)
- *Variety development Updates--* [Julie Enfield, NW Plant Company](#); [Chad Finn, USDA-ARS](#); [Pat Moore, WSU](#); [Michael Dossett, B.C.](#); [Tom Peerbolt, Northwest Berry Foundation](#).
- [Determining Cold Hardiness in Washington Blueberries](#)

Research Update

- [Do Foliar Calcium Applications Increase Fruit Quality in Caneberries and Strawberries?](#)
(Presented 1/14) Power Point slides from Dr. Bernadine Strik's presentation at the recent North Willamette Hort Society' meeting in Canby, OR.

Berry Event Calendar

Events with Grower Information Sessions

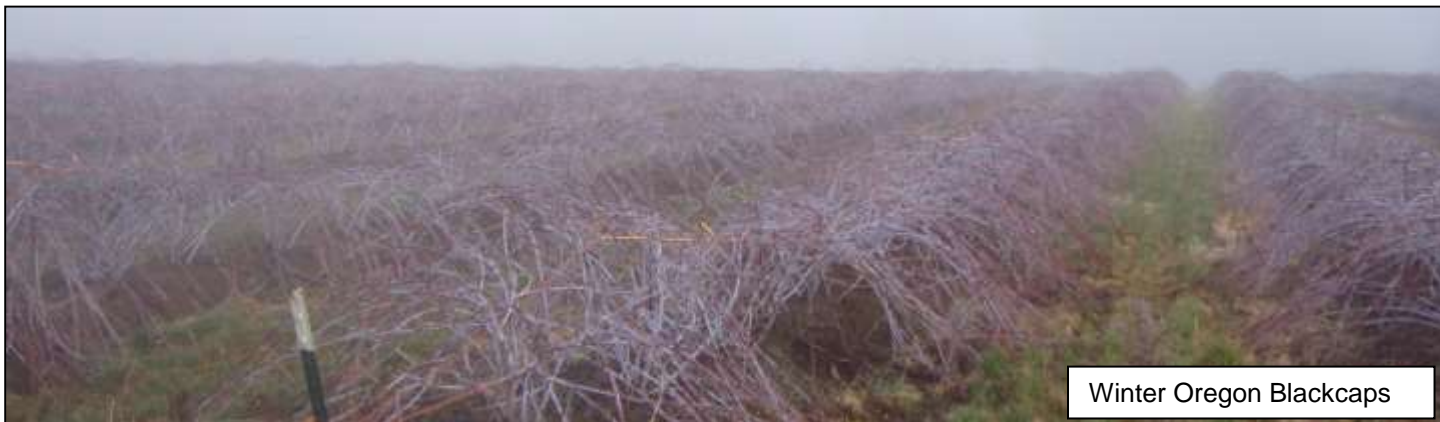
- **January 25 — Oregon Blueberry Conference** ~ 8am-7pm, Red Lion on the River, Portland. [Go here](#) to register and see details of the event.
- **January 28-30 — Horticulture Growers Short Course at the Pacific Agriculture Show**, Tradex, Abbotsford, BC. [Go here](#) for to see the program and on-line registration.
- **February 18 — Oregon Strawberry Commission Annual Meeting** ~ at North Willamette Research & Extension Station. Email Philip Gutt for more information, pnwa@comcast.net.
- **March 9 — 11th Annual Production Workshop for Commercial Raspberry & Blackberry Growers** ~ at the Wellspring Conference Center in the Silverton Health Building, 1475 Mt. Hood Ave., Woodburn, OR. Details coming soon. For more information call the Northwest Berry Foundation (503) 289-7287.

Commission Meetings

- **February 29 — Oregon Raspberry and Blackberry Commission** ~ 11 am Hayden's Grill, Tualatin. Committee meetings start at 9. Contact: berries@oregon-berries.com
- **March 15 — Oregon Blueberry Commission meeting** ~ Noon at the Chemeketa Events at Winema, Building 48, Room 210, Salem. Email jenny@ostlund.com for more information.
- **April 26 — Oregon Blueberry Commission meeting** ~ Noon at the Chemeketa Events at Winema, Building 48, Room 210, Salem. Email jenny@ostlund.com for more information.

National Berry Events

- **March 1-4 — 2016 North American Raspberry & Blackberry Conference** ~ Williamsburg, Virginia. [Go here](#) for all the details.
- **March 2-4 — North American Blueberry Council & US Highbush Blueberry Council Spring meetings** ~ Dallas, Texas. [Go here](#) for the draft agenda. Go here for more information: [U.S. Highbush Blueberry Council website](#).



Industry news/resources

Berry research blogs

- [Strawberries and Caneberries](#) by Mark Bolda, UC Davis Berry Extension Agent. **Recent Entry: (1/16) New raspberry varieties Imara, Kwanza and Kweli Reports on recent insect and disease research and observations in California.**
- [Team Rubus](#) by Gina Fernandez, North Carolina State Small Fruit Specialist. **Recent Entry: (12/16) Blackberry and raspberry seasonal checklist for Winter 2015-16 Reports on issues in blackberries and raspberries from the Southeast**

Newsletters/ berry reports

- [Whatcom Ag Monthly](#) Produced by WSU Whatcom County Extension. Includes excellent berry crop information.
- [National Berry Report](#) Daily fresh market berry reports generated from data from the USDA Agricultural Marketing Service. Hosted by the California Strawberry Commission.
- [Weekly Market Report from General Produce](#)
- [Weekly Chilean Blueberry Committee Crop & Exports Report](#)
- [USDA Market News \(Fruits & Vegetables\)](#)

Magazine/website compilations

- **Fresh Plaza:** [fruit](#)
- **The Packer:** [blueberries](#), [blackberries](#), [raspberries](#), [strawberries](#).
- **Growing Produce:** [recent berry articles](#).
- **Andnowyouknow.com:** [blueberries](#), [blackberries](#), [raspberries](#), [strawberries](#).
- **Fruitnet-Eurofruit:** [recent berry articles](#).
- **Fresh Fruit Portal:** [blueberries](#), [blackberries](#), [raspberries](#), [strawberries](#).

Weather/Climate

- California: [El Nino conditions already weakening](#) (1/12, Capital Press)
- Washington: [Wet end to hot year bodes well for Washington in 2016](#) (1/14, Capital Press)

Water

- [Water battles will come to head in 2016, experts say](#) (1/12, Capital Press)

Pollinators/Pesticides

- [EPA releases insecticide risk assessment that shows threat to bees](#) (1/8, The Packer)

Pesticides

- [USDA says pesticide levels in produce, other foods not a threat](#) (1/13, Food Safety News)
- [USDA report: No safety concern for pesticide residues on U.S. food](#) (1/13, Fruit Grower News)

Organics

- [USDA to help producers transition to organic farming](#) (1/18, US AgNet)

West

- Washington: [Blueberry grower fined for irrigating too many acres](#) (1/8, Capital Press)

International

- Peru: [Peruvian blueberry exports triple in 2015](#) (1/19, Fresh Fruit Portal)
- Mexico: [Alliances for strawberry exports to the U.S.](#) (1/19, Fresh Plaza)
- Chile: [Chilean blueberries debut in Germany's International Green Week](#) (1/19, Fresh Plaza)

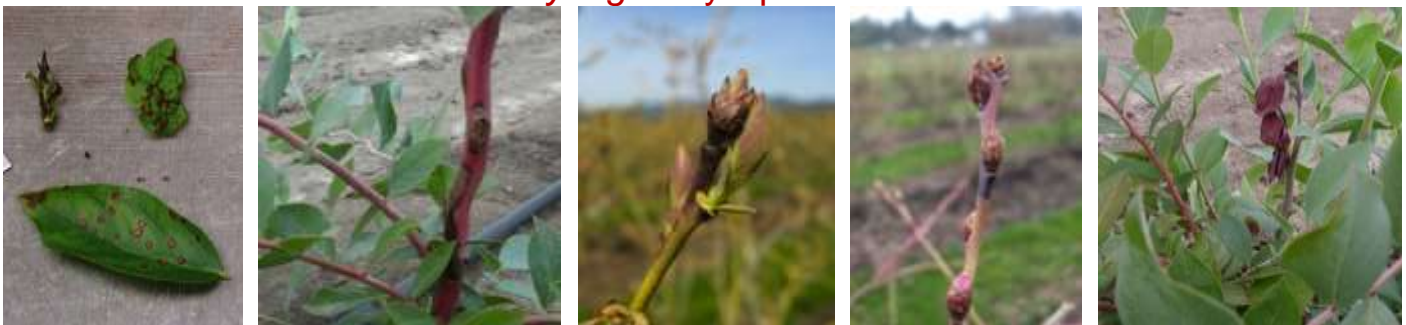


Pest Management Information

Bacterial Blight (*Pseudomonas syringae*), blueberries.

- [Go here](#) for a PCM Research Update on bacterial blight first posted on 1/3/13.

Pseudomonas syringae symptoms in blueberries



Photos are from Joyce Loper's & Virginia Stockwell's power point presentation of their work on this disease

- Late January and February can bring warm spells that can cause blueberry buds to start swelling.
- These swelling buds are vulnerable to infection by the ever present bacteria, *Pseudomonas syringae*, especially during warm, wet weather.
- Once infected, those buds are vulnerable to subsequent freeze damage at a higher temperature than buds that aren't infected.
- If warm, wet weather is predicted, applications of copper can help prevent *Pseudomonas* infections
- **Caution:** Many strains of this bacteria are resistant to copper compounds. Avoid over applying to help minimize resistance.

Starling management

- Right now starlings are starting to think about fledging (*you know they are...*). Population control becomes very difficult once that starts because they multiply rapidly. This is a major pest species that needs year round management attention.
- [Click here](#) for a starling fact sheet.
- [Click here](#) for a starling nesting fact sheet.
If they're thinking about fledging, you need to think about managing them.

Archived Small Fruit Updates

(For older Updates [go here.](#))

[1-SFU01-04-16](#)

[48-SFU11-25-15](#)

[46-SFU11-10-15](#)