

# Small Fruit Update



Providing Northwest berry growers with the information they need when they need it.

The Small Fruit Update is sent out weekly during the growing season by [Peerbolt Crop Management](#) and is funded entirely by the Northwest berry growers and industry through their commissions and councils.

January 6, 2015

Week 2

## Table of Contents

[The Northwest Berry Foundation](#)  
[Upcoming Regional Events](#)  
[Upcoming National Berry Events](#)  
[Pesticides/MRLs](#)  
[Grower Resources](#)  
[Pest Management](#)  
[Industry News](#)

Marionberries in the Willamette Valley—in about seven months...



[The Weather Cafe](#) by Rufus La Lone [Small Fruit Cold Storage](#) report

## Happy New Year to All!

### Items of note:

- Sometime over the next month or so, you're going to notice that the Small Fruit Update is coming from a new organization: **The Northwest Berry Foundation**. Some details are provided below. Down the road it'll hopefully be a vehicle for expanding grower supported services and research throughout our regional berry community.
- I've had a request from some of our OSU and WSU researchers to encourage growers to **fill out a short online survey concerning the impacts spotted wing drosophila (SWD)** have had on your operations. [Go here](#) to participate. I know it says North Carolina but it is a national survey, really. Having actual grower numbers makes a critical difference for both researchers and the government people who distribute research money. Only you know how much this pest is costing you! Let them know! Please?
- Another request from Dr. Bernadine Strik at OSU concerning the upcoming **OSU Blueberry School (March 16 & 17)**. [Go here](#) for the program and registration. "This two-day blueberry 'school' is intended for both new and experienced blueberry growers, farm managers, crew leaders, advisors, packers/shippers, and consultants." A lot of great information as well as getting to know many of our Northwest blueberry research and extension people. This kind of expertise in one place is invaluable to all of us regardless of our experience level. [Go here](#) for sponsorship information.

### Disseminating information for: Washington

[Washington Red Raspberry Commission](#)  
[Washington Blueberry Commission](#)  
[Washington Strawberry Commission](#)

### Oregon

[Oregon Raspberry and Blackberry Commission](#)  
[Oregon Blueberry Commission](#)  
[Oregon Strawberry Commission](#)

### British Columbia

[B.C. Strawberry Growers Association](#)  
[Raspberry Industry Development Council](#)  
[B.C. Blueberry Council](#)

### National

[North American Blueberry Council](#)

Tom Peerbolt, SFU Editor

# The Northwest Berry Foundation

---

About the foundation:

- My wife/business partner, Anna and I, owners of Peerbolt Crop Management, Inc. (PCM), have formed a 501(c)(3) nonprofit corporation, the Northwest Berry Foundation (NWBF), and are in the process of finalizing both the necessary paperwork and recruiting the initial board of directors.
- The purpose of the foundation is to support the sustainability of Northwest berry growers and the Northwest berry industry.
- To accomplish this, the NWBF will be managing the industry-wide services previously managed by PCM. These services presently include the Small Fruit Update newsletter, the BerriesNW.com website and various industry workshops.
- The NWBF will also manage some research projects that fit into its mission, such as on-farm variety trials.
- PCM will continue providing its in-field services with growers, researchers and processors as it always has.
- This is just an appropriate time to alter the corporate structure 'shell' to better fit the services provided as well as hopefully pave the way for new directions and collaborations that would support and strengthen the northwest berry industry in the future.
- Get a hold of us if you've got questions or comments about the Northwest Berry Foundation. 503 289-7287; [tom@peerbolt.com](mailto:tom@peerbolt.com); [anna@peerbolt.com](mailto:anna@peerbolt.com).

## Upcoming Regional Events

---

[Go here for Full Event Calendar](#)

- **January 12 & 13 — 74rd Annual Pacific Northwest Insect Management Conference.** ~ At the Hilton Hotel, 921 SW 6th Ave, Portland, OR 97204. [Go here](#) for the details. Proceedings from the previous years can be viewed [here](#).
- **January 13 — Oregon Raspberry and Blackberry Commission Meeting** ~ Langdon Farms Golf Club Restaurant, Aurora. [Go here](#) for the agenda and contact information.
- **January 15 — North Willamette Horticulture Society Berry Day** ~ Clackamas County Event Center, Canby, OR. [Go here](#) for all the details.
- **January 21, 2015 — Oregon Strawberry Commission** ~ 12pm at Jake's Deli, 1208 SW Baker St., in McMinnville. Call 541-758-4043 or [email Philip Gutt](mailto:email.Philip.Gutt) for more information.
- **January 27, 2015 — Oregon Blueberry Conference** ~ Red Lion Hotel at Jantzen Beach, Portland. [Go here](#) for the program and registration links.
- **January 29-31 — Horticulture Growers Short Course at the Pacific Agriculture Show**, Tradex, Abbotsford, BC. [Go here](#) for the agenda. [Go here](#) for registration and show information.
- **February 18 — 9th Annual ORBC Production Workshop for Commercial Raspberry and Blackberry Growers** ~ at the Wellspring Conference Center in the Silverton Health Building, 1475 Mt. Hood Ave., Woodburn, OR. Details coming soon. For more information, call the Peerbolt Crop Management office (503)289-7287 or [email Lora Liegel](mailto:email.Lora.Liegel).
- **March 16-17 — OSU Blueberry School** ~ LaSells Stuart Center, Corvallis. [Go here](#) for the event website. This a great event brought back after a few years "by popular demand". It brings together a whole lot of expertise on northwest blueberries and is for both new and experienced growers. They're also in need of industry sponsors to cover expenses. [Go here](#) for sponsorship information.

## Upcoming National Berry Events

---

- **February 3-6 — NASGA Conference** ~ At the Crowne Plaza Hotel, Ventura, CA. [Click here](#) for details.
- **February 24-27 — North American Raspberry & Blackberry Association Annual Conference** ~ Fayetteville, Arkansas. Includes tour of U Arkansas blackberry breeding research (Dr. John R. Clark). For more information, contact [info@raspberryblackberry.com](mailto:info@raspberryblackberry.com) or visit [www.raspberryblackberry.com](http://www.raspberryblackberry.com).
- **February 24-27 — North American Blueberry Council and the US Highbush Blueberry Council Spring Meetings** ~ Walt Disney World Swan and Dolphin, Lake Buena Vista, Florida. [Go here](#) for the Feb 24 optional tour info; [Go here](#) for the meeting schedule; [Go here](#) for the registration form.

## Pesticides/MRL's

---

- [Updated MRL Chart for Blueberries and Raspberries](#) (as of 12/22/14)

## Grower Resources

---

- [Hard to gather good plant tissue samples](#) (2 minute video from Ag Professional) *Comments from Daniel Kaiser, Univ. of Minnesota on the difficulty of getting good feedback from plant tissue samples.*

## Pest Management

---

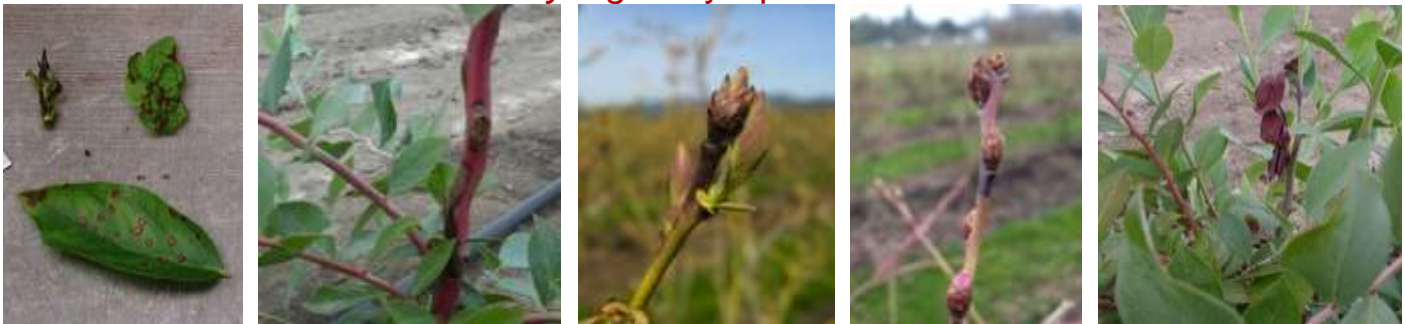
### Articles

- [Herbicide resistant kochia all the way west](#) (12/31, Ag Professional)
- [Invading Bugs raising a stink among Washington growers](#) (12/12, Western Farmer-Stockman)  
--[Go here](#) for the Oregon State University site for the latest information on Brown Marmorated Stink Bug

### Bacterial Blight (*Pseudomonas syringae*), blueberries.

- [Click here](#) for a PCM Research Update on bacterial blight first posted on 1/3/13.

### *Pseudomonas syringae* symptoms in blueberries



*Photos are from Joyce Loper's & Virginia Stockwell's power point presentation of their work on this disease*

- Late January and February can bring warm spells that can cause blueberry buds to start swelling.
- These swelling buds are vulnerable to infection by the ever present bacteria, *Pseudomonas syringae*, especially during warm, wet weather.
- Once infected, those buds are vulnerable to subsequent freeze damage at a higher temperature than buds that aren't infected.
- If warm, wet weather is predicted, applications of copper can help prevent *Pseudomonas* infections
- **Caution:** Many strains of this bacteria are resistant to copper compounds. Avoid over applying to help minimize resistance.

### Starling management

- Right now starlings are starting to think about fledging (*you know they are...*). Population control becomes very difficult once that starts because they multiply rapidly. This is a major pest species that needs year round management attention.
  - [Click here](#) for a starling fact sheet.
  - [Click here](#) for a starling nesting fact sheet.

If they're thinking about fledging, you need to think about managing them.





## Industry news/resources

---

### Newsletters/ berry reports

- [Whatcom Ag Monthly](#) *Produced by WSU Whatcom County Extension. Includes excellent berry crop information.*
- [National Berry Report](#) *Daily fresh market berry reports. Hosted by the California Strawberry Commission, this report is generated from data from the USDA Agricultural Marketing Service and is updated daily.*
- [The Source](#) (12/31) *marketing news from The Produce News.*
- [Weekly Market Report](#) (12/15) *from General Produce Company*

### Magazine/website compilations

- **The Packer:** [blueberries](#), [blackberries](#), [raspberries](#), [strawberries](#).  
*Recent stories and fresh market pricing for the various berries from The Packer.*
- **Growing Produce:** [recent berry articles](#).
- **Fresh Fruit Portal:** [blueberries](#), [blackberries](#), [raspberries](#), [strawberries](#).
- **Fruitnet-Eurofruit:** [recent berry articles](#).  
*Recent stories for the various berries from Fresh Fruit Portal.*

### Berry research blogs

- [Strawberries and Caneberries](#) by Mark Bolda, UC Davis Berry Extension Agent. **Recent entry (12/30):** **Time to change your sprayer nozzles?** *Reports on recent insect and disease research and observations in California.*
- [Team Rubus](#) by Gina Fernandez, North Carolina State Small Fruit Specialist. **Recent entry (12/23):** **Blackberry and raspberry seasonal checklist—Winter** *Reports on issues in blackberries and raspberries from the Southeast.*

### Climate/Water

- [Forecasters now predict wet winter in California](#) (12/29, Capital Press)
- [Rain above average, but snow lagging in Washington, Oregon](#) (12/15, Capital Press)

### Regulatory Agencies

- [Critics say USDA too close to food industry it regulates](#) (12/18, Capital Press)

### Labor

- [Farmers brace for labor shortage under new policy](#) (12/29, Capital Press)

### Pesticides

- [USDA pesticide summary confirms residues pose no safety risk](#) (12/22, Growing Produce)

### Research

- [Retiring OSU researchers honored](#) (12/15, Capital Press)

### The West

- California: [Strawberry growing year-round endeavor](#) (12/14, The Californian)

### North America

- [Blueberry council seeks nominations](#) (12/4, The Packer)
- [US stores dealing with strawberry shortage](#) (12/16, Fresh Plaza)
- [Maine blueberry crop had banner year](#) (1/5, Fresh Plaza)

### International

#### **Mexico**

- [Product of Mexico](#) (12/16, LA Times) *A four part expose on labor conditions on Mexican farms.*

#### **Chile**

- Chile/Scandinavia: [Chile courts Scandinavian consumers](#) (1/5, Fruitnet)
- [Chilean Blueberry Committee's report for Week 1](#) (12/29-12/31)
- China/Chile: [China intercepts fungus in Chilean blueberry shipment](#) (12/12, Fresh Fruit Portal)
- Chile: [Blues losses "minor"](#) (12/5, Fruitnet)

#### **Argentina**

- Argentina: [Early blueberry production up 200%](#) (12/4, Fresh Plaza)
- Argentina: [Blueberry harvest wraps up in Northeast Argentina](#) (12/3, Fresh Fruit Portal)
- Argentina: [New destinations for Tucuman blueberries](#) (12/11, Fresh Plaza)

#### **Peru**

- Peru: [Export of 3,000 tons of blueberries expected](#) (12/4, Fresh Plaza)

- Peru: [Over 2 million kilos of blueberries exported from January to November](#) (12/18, Fresh Plaza)

**Other**

- Poland: [Polish soft fruit promoted in Europe](#) (12/18, Fresh Plaza)
- Australia: [Shortage of berry pickers in NW Tasmania](#) (1/5, Fresh Plaza)

**Archived Small Fruit Updates**

(For older Updates [go here](#).)

[49-SFU12-01-14](#)

[47-SFU11-18-14](#)

[45-SFU11-04-14](#)